

Molly[®] 2.25

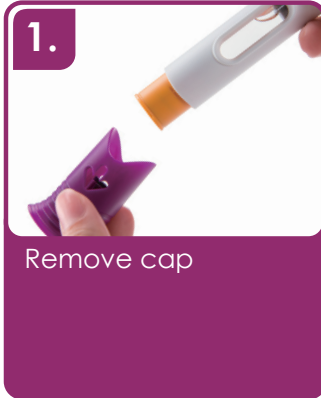
The Ideal Safety Solution



Technical Specifications

Device Type	Disposable Autoinjector
Primary Container	2.25mL Pre-filled Syringe RNS Compatible
Dosage Type	Fixed Full Contents
Needle Extension	Subcutaneous
Needle Insertion	Manual
Needle Removal	Manual
Activation Method	Needle cover

Handling Instructions



Key Features

- ✓ Easy to use 2-step operation
- ✓ Larger volume
- ✓ Ergonomic pull or twist-off cap
- ✓ Robust anti-roll design